

SUPER 1803-2

Wheeled Paver



SUPER 1803-2

- ▶ Maximum Pave Width
8m
- ▶ Maximum Laydown Rate
700 tonnes/h
- ▶ Transport Width
2.55m



Powerful Wheeled Paver

The SUPER 1803-2 is the most powerful wheeled paver in the range of VÖGELE products. At a high level of perfection, it combines features such as sturdy and reliable material handling, large pave widths up to 8m, excellent mobility and easy transfer under its own power. Thanks to the paver's statically defined undercarriage, permanent ground contact of its powered wheels is always ensured. Among the new machine's highlighting features is ErgoPlus®, the VÖGELE concept for paver handling. ErgoPlus® offers a maximum of clarity, simplicity and ease of operation. Operators have never had it so good. They enjoy a modern workplace of ergonomic design leaving nothing to be desired. The SUPER 1803-2 sets new standards in terms of paver operation and user-friendliness.

Being one of the most powerful wheeled pavers in its class, the SUPER 1803-2 handles a wide range of applications from narrow pave widths through to motorway. Please note a feature truly out of the ordinary for a wheeled paver: SUPER 1803-2 can be combined with a screed coming with the full package of VÖGELE high compaction technology.

- ▶ Maximum pave width 8m
- ▶ Laydown rate up to 700 tonnes/h
- ▶ Maximum layer thickness 30cm
- ▶ Transport width 2.55m
- ▶ Pave speed up to 18m/min.
- ▶ Travel speed up to 20km/h
- ▶ Powerful PERKINS engine rated at 129.6kW
- ▶ Comes with ErgoPlus®, the concept for easy paver handling
- ▶ Hardtop with wide sunshades



ERGOPLUS

SUPER 1803-2 – The Benefits for Users at a Glance

HIGHLIGHTS

Efficient and Eco-Friendly Drive Concept

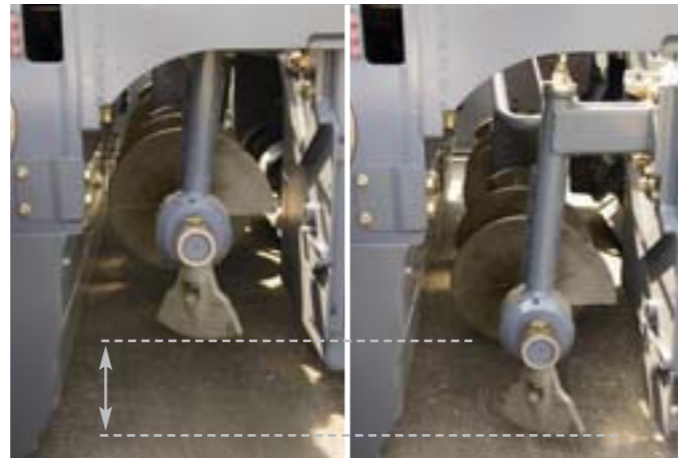
- ▶ Powerful PERKINS engine developing 129.6kW at just 2,000 rpm. The modern, low-noise engine complies with exhaust standards COM 3a and EPA.
- ▶ Different speed ranges are available which select conveniently at the push of a button (MIN, ECO Mode, MAX).
- ▶ ECO Mode (125kW at 1,800 rpm) is sufficient for many paving applications. Working in ECO Mode further decreases engine noise emission, reduces fuel consumption and wear.
- ▶ A constant pave speed is one of the crucial factors when it comes to achieving excellent pavement quality. Electronic engine management, installed in the SUPER 1803-2, ensures a consistent engine output to match demand.
- ▶ Powerful three-phase A.C. generator with generator management controlling generator output in compliance with your pave width. Heating the screed's compacting systems to operating temperature takes a short time only.
- ▶ Thanks to a large cooler assembly with innovative air routing, perfect cooling of engine cooling liquid, hydraulic oil and charge air. Noise emission is very low.
- ▶ A constantly high cooling capacity provides for ideal temperatures inside the hydraulic system and top performance of all drive units even when working under full load and at high ambient temperatures up to 50 °C.
- ▶ For hydraulic functions, powerful separate drives are installed operating in closed circuits, thus delivering highest outputs.

Mobility on Wheels

- ▶ Small turning radius (outside) of just 6.5m allows easy and quick manoeuvring even in tight corners.
- ▶ Maximum power transmission thanks to separate, hydraulic drives provided for the rear wheels and one set of front wheels (all-wheel drive as an option).
- ▶ Electronic Traction Management guarantees optimum tractive effort and protects the engine against overload.
- ▶ Permanent ground contact due to front wheels with proven, statically defined three-point support.
- ▶ Travels rapidly on roads (up to 20km/h) and moves quickly on the job site.
- ▶ Thanks to its compact design, trucking is easy. Little space required for transport cuts down on haulage cost.



SUPER 1803-2 – The Benefits for Users at a Glance



Large Material Hopper and Easy Feed with Mix

- ▶ The large material hopper holding 13 tonnes is amply dimensioned so that a sufficient quantity of mix is stored at all times. No problem to tide over difficult situations such as paving under bridges, for instance.
- ▶ Easy feed with mix thanks to low material hopper, wide hopper sides and sturdy rubber baffles fitted to the hopper front.
- ▶ Large oscillating push-rollers for convenient and shock-free docking of feed vehicles.
- ▶ Thanks to a hydraulically operated hopper front (option), no spills of mix when feed lorries change. Directs the mix inside the material hopper right onto the conveyors, so no hand work with shovels required. The entirety of mix is properly conveyed in front of the screed.

Perfect Conveyance and Spreading of Mix – A Must for Prime Pavement Quality

- ▶ Powerful, separate hydraulic drives for conveyors and augers are installed achieving laydown rates up to 700 tonnes/h.
- ▶ Proportional control and continuous monitoring provided for conveyors and augers guarantee a constant head of mix in front of the screed in conformity with the requirement.
- ▶ Augers complete with bearing boxes and limiting plates for the auger tunnel are infinitely variable in height up to 20cm.
- ▶ Due to auger height adjustment, optimal spreading of mix even when paving thin layers or on sections where layer thickness varies.
- ▶ Large diameter of auger blades (400mm) for excellent spreading of mix when paving in large widths.

Easy Maintenance – Long Intervals Between Maintenance Services

- ▶ A wide engine hood and large hinged panels give convenient access to service points on the machine.
- ▶ All hydraulic pumps attached to the transfer gearbox. Their clear arrangement and easy access provides for service-friendliness at the highest level.
- ▶ Centralized lubrication system installed to automatically supply required amounts of grease to bearings of conveyors and augers.
- ▶ Sturdy components of highly wear-resistant materials for long service lives minimize downtime.
- ▶ A uniform service concept for all VÖGELE pavers simplifies maintenance and cuts expenditure on training.

HIGHLIGHTS

The User-Friendly Concept for Paver Handling

HIGHLIGHTS

ErgoPlus® Operator Stand Offers Excellent All-Round Visibility

- ▶ The comfortable operator stand gives unobstructed view of all hot spots on the paver such as material hopper, steering guide or screed. It allows the operator to easily monitor the paver's feed with mix, for instance.
- ▶ Seats swung out to the sides and an orderly designed operator platform provide for free visibility of the auger tunnel, permitting the paver operator to keep an eye on the head of mix in front of the screed at all times.
- ▶ The ergonomically designed operator environment allows convenient working. A legroom kept warm adds to operator comfort during the cold season.

There's a Place for Everything

- ▶ The operator's stand of streamlined design is very well organized. It offers plenty of stowage room allowing to keep your machine in good order.
- ▶ Compartments for theft protection are provided beneath the operator's seats to stow away the screed consoles at the end of the day.
- ▶ The operator's console protected by an unbreakable cover keeps off unauthorized persons and prevents damage through vandalism.

Hardtop Gives Excellent Protection

- ▶ Modern hardtop of glass fibre reinforced polymer material shelters the operator whether rain or shine.
- ▶ Wide sunshades extending easily give the operator optimal protection even when seat moved out.
- ▶ Hardtop, including muffler end pipe, raises up or lowers down quickly and with effortless ease by manually operated hydraulic pump.
- ▶ Six bright working lights are integrated into the hardtop. Raising the lights in this way floods the job site with light (Xenon lamps available as an option).



The User-Friendly Concept for Paver Handling



ErgoPlus® Consoles for Paver and Screed Operators

- ▶ The paver operator's console sliding across the full width of the operator stand and adjusting easily allows convenient working in an ergonomic position also when seat swivelled outwards.
- ▶ Paver functions are logically arranged and clustered in groups complying with the needs of a road building site, thus ensuring easy and positive handling of the machine.
- ▶ Direct access to paver functions by push-buttons. Thus, reversing auger rotation, for instance, can easily be initiated by the screed operator at the touch of a button.
- ▶ Push-buttons are reliably identifiable by touch even when wearing work gloves, so that operator error is positively precluded.
- ▶ Large easy-to-read displays on the paver operator's and screed operators' consoles show vital paving data on menu level 1.
- ▶ A clear menu structure in combination with self-explanatory symbols provides for easy use of the display.
- ▶ The paver operator's console lights up automatically as darkness falls, thus creating best possible conditions for night-time work.
- ▶ When leaving "Pave Mode", a smart Memory feature stores last settings for paver functions so that, when resuming work after a move of the paver on site, these settings are restored automatically.
- ▶ Not only on the paver operator's console but on the screed operators' consoles, too, can vital paver and screed data be displayed and set-ups or adjustments be made.
- ▶ The modular design of the paver operator's console permits easy and inexpensive replacement of single modules without having to replace the entire unit.

Grade and Slope Control is Child's Play with NIVELTRONIC® Plus

- ▶ NIVELTRONIC® Plus, the cutting-edge VÖGELE System for Grade and Slope Control (option), stands out through easy handling and achieves excellent paving results.
- ▶ Easy operation thanks to the use of symbols neutral in language.
- ▶ For direct access, all major NIVELTRONIC® Plus functions are located on menu level 1.
- ▶ An electronic system is installed in the tow point rams measuring the tow points' positions.
- ▶ Current positions of tow point rams and slope are shown on the paver operator's and the screed operators' consoles for easy set-up of the screed.
- ▶ All sensors connected are recognized automatically by NIVELTRONIC® Plus and can be controlled and monitored from the screed operator's console.



Screed Options

A powerful tractor unit calls for a screed to match. Each application has its particular requirements, so that in the end it's up to the users' everyday needs to decide which screed is the right one.

For SUPER 1803-2, we offer two screed options available in several versions as far as equipment with compacting systems is concerned.

- ▶ VÖGELE Extending Screeds feature a high degree of variability. AB 500-2 and AB 600-2 come with a sturdy single-tube telescoping system. Working with highest precision, they offer quick screed width control accurate to the millimetre.
- ▶ Please note a feature truly out of the ordinary for a wheeled paver: SUPER 1803-2 also combines with an AB 500-2 Extending Screed in TP1 version for high compaction, an essential to pavements perfectly built up in layers, true to line and level.



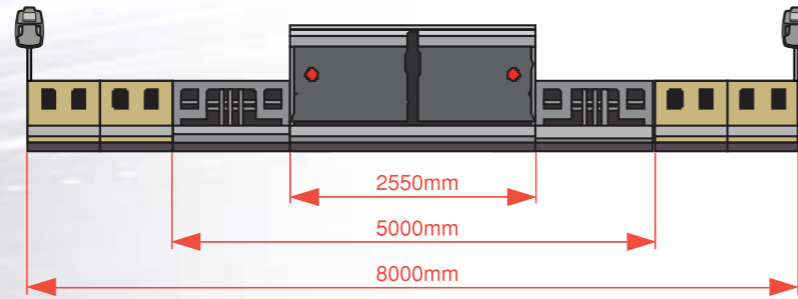


In Detail: Screed Options for SUPER 1803-2

AB 500-2

- ▶ **Pave Widths:**
 - Infinitely variable range from 2.55m to 5m.
 - Larger widths by addition of bolt-on extensions up to a maximum of 8.0m.
- ▶ **Screed Versions:**
 - AB 500-2 TV with tamper and vibrators
 - AB 500-2 TP1 with tamper and 1 pressure bar

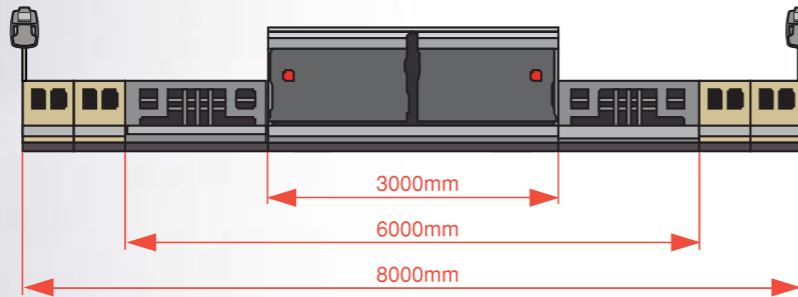
Example: AB 500-2 TV built up to maximum pave width



AB 600-2

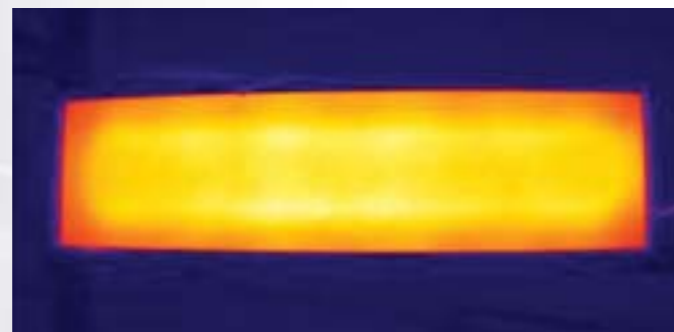
- ▶ **Pave Widths:**
 - Infinitely variable range from 3m to 6m.
 - Larger widths by addition of bolt-on extensions up to a maximum of 8m.
- ▶ **Screed Versions:**
 - AB 600-2 TV with tamper and vibrators

Example: AB 600-2 TV built up to maximum pave width



▶ Electric Screed Heating:

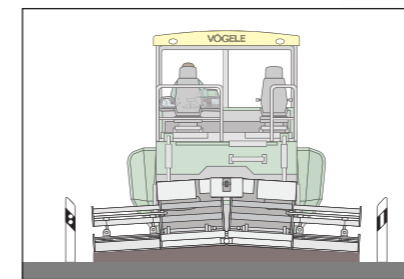
- Homogeneous surface texture thanks to uniform heating of screed plates, tamper bars and pressure bar(s).
- Even with engine running at minimum rpm, the time required for the screed to reach operating temperature is reduced substantially thanks to intelligent Generator Management.
- With paver functions set to automatic, the Generator Management activates Alternating Mode for screed heating (heats the screed alternately to left and right), a feature which is easy on the engine and reduces fuel consumption considerably.



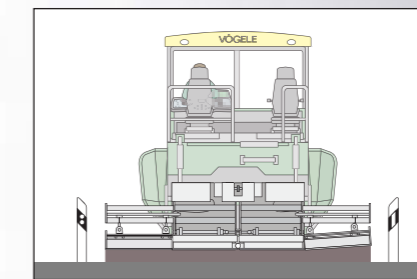
Infrared thermal image of a screed plate. Constant and uniform heating all over the screed plate is crucial for high pavement quality.

▶ Transverse Pavement Profiles:

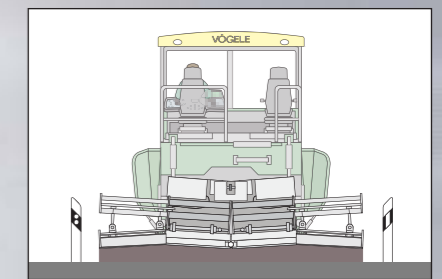
- Positive and negative crown can be paved with all screed types.
- The AB screeds' extending units adjustable in height and spindles provided on either side of each extending unit allow the Extending Screeds to be set up to a variety of additional special profiles.



Positive or negative crown.



Extending unit sloped above horizontal on one side.

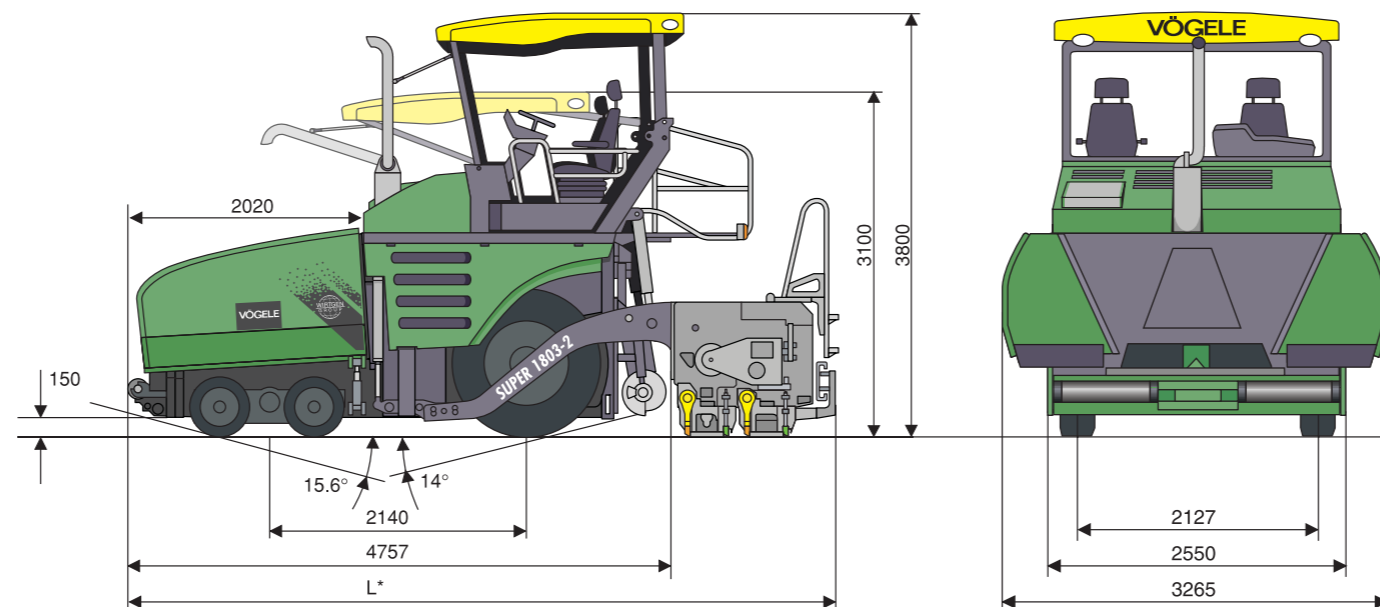


M or W profile.

OPTIONAL EQUIPMENT FOR SUPER 1803-2

- ▶ Hydraulic hopper front
- ▶ Hardtop of glass fibre reinforced polymer material
- ▶ All-wheel drive
- ▶ NIVELTRONIC® Plus for Automated Grade and Slope Control (various sensors available)
- ▶ Sonic sensors to monitor head of mix in front of the screed
- ▶ Washdown system
- ▶ Xenon lamps for working lights
- ▶ Operator's seat, ergonomic design and heated

For more optional extras please contact your VÖGELE partner.



Dimensions in mm
L* = Dependent on Screed Type (see Specification)

Specification SUPER 1803-2

Power Unit

Engine: 6-cylinder PERKINS diesel engine, liquid-cooled
 Type: 1106D-E66TA
 Output: Nominal: 129.6kW at 2,000 rpm (according to DIN)
 ECO Mode: 125kW at 1,800 rpm
 Fuel Tank: 220 litres
 Electrical System: 24 V

Undercarriage

Front Wheels: 4, mounted on bogies (oscillating axle)
 Tyre Equipment: solid tyres
 Tyre Size: 540/300-390mm
 Rear Wheels: 2, pneumatic tyres, tubeless
 Tyre Size: 14.00 R 25
 Drive: separate hydraulic drive provided for each wheel
 - Standard: 2 rear wheels and 2 front wheels powered
 - Option: 2 rear wheels and 4 front wheels powered (all-wheel drive)

Speeds: - Paving: up to 18m/min., infinitely variable
 - Travel: up to 20km/h, infinitely variable

Turning Radius: 6.5m (outside)
 Power Steering: hydraulic
 Service Brake: amply-dimensioned multiple-disk brake operated by foot pedal
 Auxiliary Brake: hydrostatic
 Parking Brake: spring-loaded multiple-disk brake, maintenance-free

Material Hopper

Hopper Capacity: 13 tonnes
 Width: 3,265mm
 Feed Height: 594mm (bottom of material hopper)
 Push-Rollers: oscillating, displaceable forwards by 100mm

Conveyors and Augers

Conveyors: 2, with replaceable feeder bars, conveyor movement reversible for a short time
 Drive: hydraulic, separate drive provided for each conveyor
 Speed: up to 25m/min., infinitely variable (manual or automatic)
 Augers: 2, with replaceable auger blades, auger rotation reversible
 Diameter: 400mm
 Drive: hydraulic, separate drive provided for each auger
 Speed: up to 83 revs/min., infinitely variable (manual or automatic)
 Auger Height:
 - Standard: infinitely variable by 14cm, mechanical
 - Option: infinitely variable by 20cm, hydraulic (lowest position 5cm above the ground)
 Lubrication: Centralized Lubrication System with electrically driven grease pump for conveyor and auger bearings

Screed Options

AB 500-2: basic width 2.55m, infinitely variable range 2.55m to 5m maximum width (TV/TP1) 8m
 AB 600-2: basic width 3m, infinitely variable range 3m to 6m maximum width (TV) 8m

Screed Versions: TV, TP1
 Layer Thickness: up to 30cm
 Screed Heating: electric by heating rods
 Power Supply: three-phase A.C. generator

Dimensions and Weights

Length: Tractor Unit and Screed in Transport Position:
 - AB 500-2/AB 600-2 TV: 6m
 - AB 500-2 TP1: 6.1m
 Weights: Tractor Unit with AB 500-2 Screed in TV Version:
 - Pave Widths up to 5m: 17.3 tonnes
 - Pave Widths up to 8m: 19.1 tonnes

Key: T = equipped with Tamper P1 = equipped with 1 Pressure Bar
 V = equipped with Vibrators

AB = Extending Screed

Technical alterations reserved.

© ErgoPlus, InLine Pave, NIVELTRONIC, NAVITRONIC, RoadScan and V-TRONIC are registered Community Trademarks of JOSEPH VÖGELE AG, Mannheim. PCC is a registered German Trademark of JOSEPH VÖGELE AG, Mannheim. We reserve the right to make technical or design alterations. Legally binding claims cannot be derived from written information or pictures contained in this brochure. Pictures may differ from offered products.

JOSEPH VÖGELE AG

Neckarauer Straße 168-228
 68146 Mannheim · Germany
 info@voegele-ag.de

Telephone: +49 (0)621 8105 0
 Fax: +49 (0)621 8105 461
 www.voegele.info

